

# OUR ROVING CAMERAMAN

THE aboriginal people in this State are scattered over a wide area, so far apart that many of them may never meet, but the magic camera can bring to us intimate glimpses of these people and enable us to become better acquainted with each other.

If you have photos at home, similar to those you see published in *Dawn*, send them along and thus add to, and maintain, the interest in your fellow men and women.



Alex Bell, Clive Russell and Jimmy Wallace drive through the Cowra entrance



Meet pretty Irene Clarke, of Oberon



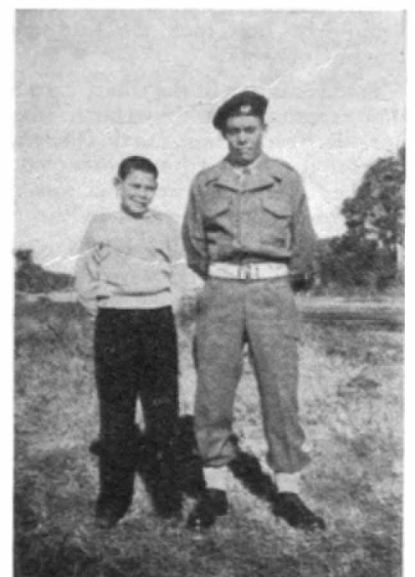
"Wilduns" of Nanima Second Class



Tessie Kirby and Olive Mitchell, of Cootamundra, prepare to cool off



Big Smiles from Dell Slater and Marie Dumas, of Purfleet



Laurie Jackson, of Albion Park Rail Head and a friend