



OUR ROVING CAMERAMAN

THE aboriginal people in this State are scattered over a wide area, so far apart that many of them may never meet, but the magic camera can bring to us intimate glimpses of these people and enable us to become better acquainted with each other.

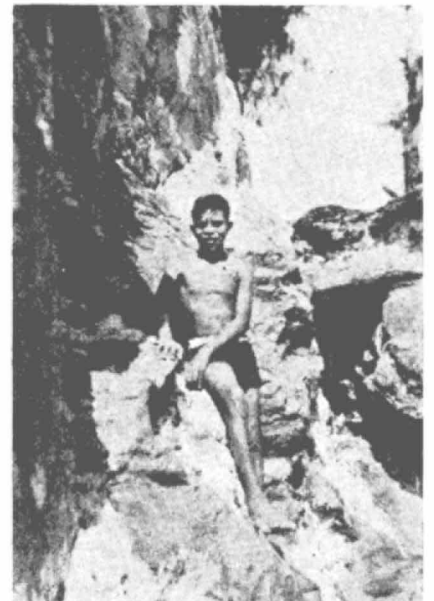
If you have photos at home, similar to those you see published in *Dawn*, send them along and thus add to, and maintain, the interest in your fellow men and women.



Colleen, Allan, Ena and Barbara Duncan, of Boggabilla.



Olive Colless, of Muttama, has a far away look.



Young Stan Knox used to live at Boggabilla but now he's up in Darwin.



These pretty lasses are Shirley Wedge, Matron's assistant at Cowra, and her friend, Ethel Bamblett.



Patsy Sands of Lightning Ridge looked lovely as she posed for the cameraman.



A lot of smiles with Olive, Dorothy and Irene Mitchell and Ruth McKenzie, all of Muttama, via Cootamundra.